



TOP IMAGE

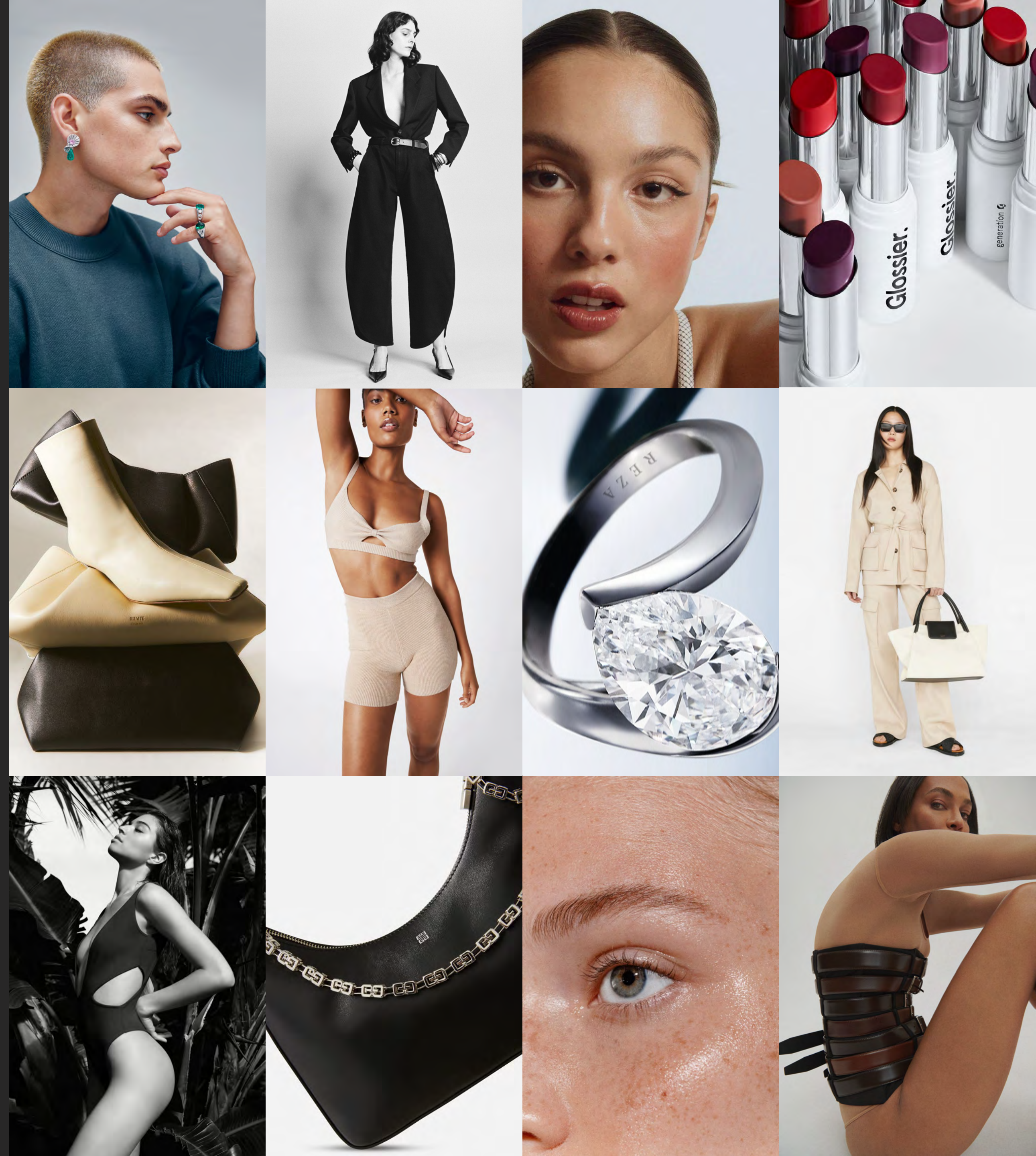
**TOP IMAGE IS A BOUTIQUE POST-PRODUCTION STUDIO ROOTED IN THE ART OF SUBTLE,
ELEVATED RETOUCHING AND WHITE-GLOVE CLIENT SERVICES.**

**WE ARE RECRUITED FOR OUR INDUSTRY EXPERTISE AND UNWAVERING COMMITMENT
TO QUALITY, SERVICE AND TRANSPARENCY.**

Working with founders Lloyd and Alison you have access to a combined 30 years of expertise in post-production, image direction, photography and production for a wide range of luxury fashion and beauty brands.

Their extensive knowledge and bespoke services blend seamlessly with your teams ever evolving creative and logistical needs.

Our approach emphasises simplicity- streamlined communication and collaboration ensures every image reflects your aesthetic and maintains consistency across all visual touchpoints.



khy

STITCH FIX

Glossier.

A M I R I

3.1 *Phillip Lim*

elysewalker

TRUSTED BY THE LEADERS IN FASHION

for all **7** mankind®

VICTORIA BECKHAM

F R A M E

LOEFFLER RANDALL

R E Z A

BERSHKA



LOS ANGELES

NEW YORK

LONDON

Our post-production teams are located in New York, Los Angeles, London and Sydney, allowing for 24/7 workflows and unparalleled turn around times.

Each team member is expert in retouching, grading, compositing, and project management, and is available to partner as a direct extension of your in-house team.

SYDNEY

TOP IMAGE SERVICES HAS BEEN AN INSTRUMENTAL PARTNER TO STITCH FIX. THEY CONSTANTLY DELIVER A HIGH QUALITY OF WORK, ARE COMMUNICATIVE AND ALWAYS WILLING TO WORK WITH US WHEN SCHEDULES GET TIGHT. BECAUSE OF OUR CLOSE PARTNERSHIP, WE WERE ABLE TO TAKE ALL RETOUCHING OUT-OF-HOUSE AND CONDENSE OUR OVERALL TURNAROUND TIME BY 2 WEEKS.

CARLY IRON, PRODUCER + POST-PRODUCTION MANAGER, STITCH FIX

5 STARS. A PROFESSIONAL AND EXPERIENCED TEAM, OUR GO-TO FOR BRAND PROJECTS.

K.D. HEAD OF PRODUCTION, FRAME

TOP IMAGE WORKED UNDER OUR TIGHT DEADLINES WITH GRACE AND EFFICIENCY. THEY SUPPORTED THE LAUNCH OF OUR SITE QUICKLY RETOUCHING OVER 10,000 E-COM IMAGES, AND CONTINUED TO DELIVER 600-800 IMAGES PER WEEK AFTER. THEY DEVELOPED AN EDITORIAL LOOK FOR OUR IMAGERY THAT WAS ON-BRAND AND ELEVATED OUR LUXURY PRODUCTS.

LAURA HICKEY, STUDIO OPERATIONS, ELYSEWALKER

TOP IMAGE IS AN INTEGRAL PART OF REZA'S VISUAL IDENTITY.

OLIVIA STAUBER, ART DIRECTOR, REZA



OUR PROCESS

DISCOVERY

- Project Briefing
- Aesthetic Alignment
- Test Retouch

POST-PRODUCTION

- Services Rendered
- Revision Rounds
- Finalization

DELIVERY

- Formatting
- File Sharing Method Of Your Choice



PRICING & QUOTES

TRANSPARENT PRICING

We offer competitive fixed-rate pricing for ad hoc projects and discounts for high-volume and on-going partnerships.

REQUEST A QUOTE

Please [email](#) us details about your project:

- **Type of project(s)**
- **Volume of assets**
- **Frequency of project(s)**
- **Estimated lead times**

Example: E-commerce, 250-300 images per season, x4 seasons per year. Lead time: 1 week.

TEST RETOUCHING

Interested in our quality? We offer a complimentary test retouch during the discovery phase. Share a few high-res images along with your notes and standards to get started.



[EMAIL](#)

[WEBSITE](#)

[INSTAGRAM](#)

[LINKEDIN](#)

TOP IMAGE